

The KONE logo is positioned in the top right corner of the image. It consists of the word "KONE" in white, uppercase letters, each letter contained within a separate blue square. The background of the entire image is a 3D-rendered elevator interior with bright green walls, a grey ceiling with recessed lighting strips, and a grey floor. A silver handrail with black end caps is mounted horizontally across the front of the elevator car. The elevator door is closed and has a light-colored, textured top section.

KONE

# CREATING THE PERFECT ELEVATOR

KONE Design Collection Basic

# CREATING THE PERFECT ELEVATOR

When it comes to creating a consistent look and feel throughout your building, elevators play a key role. By freely combining KONE's flexible and versatile selection of materials and accessories, you can create an elevator interior that matches your building's design perfectly.

## HOW TO CREATE YOUR CUSTOM ELEVATOR DESIGN

### 1 Choose the combination of wall, floor, and door material

Our wide range of available choices ensures that you can find the perfect combination to match your building's design, budget, and intended use requirements. For example, if durability and comfort are important, stone flooring is long-lasting and maintains its appearance even under heavy use, while colored or wood laminate wall finishes help to create a warm ambience inside the car. For a more exclusive look and feel, our new patterned steel and 3D glass finishes can really make your elevator stand out.

### 2 Select your ceiling design

KONE offers a wide range of different ceiling designs, equipped with modern and innovative lighting solutions that help create just the right atmosphere inside the elevator. Our ceilings are designed to give the best possible lighting quality while avoiding glare, ensuring every elevator trip is a pleasant and safe one. KONE's lighting solutions are also energy efficient – our LED lights use 80% less energy than traditional halogen lights.

### 3 Choose your accessories

Our accessories are designed to increase convenience for passengers, and include options such as handrails, seats, car operating panels, information screens, and tenant directories. KONE accessories have been designed to meet the specific requirements of different users and building types. For example, we offer special graphics designed for car operating panels in senior housing and children's hospitals, as well as customizable solutions for office, hotel, and retail environments.

## MATERIALS AND ACCESSORIES FOR ALL PURPOSES

This catalog presents our complete selection of elevator car interior materials and accessories. The options are grouped into three categories: basic, standard, and premium. Premium materials and accessories have been created using exclusive materials and components.

Consult your KONE sales contact to discuss your final interior selection and to get any additional information and support you may need.

## MIX & MATCH CAR ELEMENTS



# DESIGNED TO DELIGHT

Patterns that catch the eye. Finishes that enhance the look and feel of your building. Lighting that adds mood and atmosphere. Material combinations that inspire and delight. Add emotion to your elevator with the KONE Design Collection.

## GOOD DESIGN ADDS REAL VALUE

A well-designed elevator can have a huge impact on the way people feel about your building and connect with it. From residential buildings and hotels to retail and office environments, the ability to give people a comfortable ride in a pleasant, accessible environment speaks volumes about your building and your values.

- A well-designed elevator has a positive impact on everyday living in residential buildings. It should combine sophisticated design details with practical, functional features.
- In hotels retail environments, combining inspiring design with reliable operation and excellent usability creates a positive lasting impression for guests and visitors alike.
- In commercial spaces such as offices, a visually impressive elevator that also delivers great performance is a compelling factor for both potential and existing tenants.

## THE KONE DESIGN COLLECTION

The new KONE Design Collection is a versatile set of inspiring elevator car interiors created by KONE's award-winning design team. Choose a complete interior from one of our six design themes, or create your own unique design by mixing and matching our wide range of materials, colors, finishes, and patterns with your choice of accessories and lighting solutions.

## CUTTING-EDGE DESIGN BASED ON IN-DEPTH RESEARCH

This collection is the result of years of expert design research. Drawing on continuous studies of the latest trends in architecture, design, and material technology, our team of design professionals has created a diverse set of themes that appeal to a wide variety of tastes and are flexible for use in a range of different environments. The unique patterns and material finishes we offer have been created especially for KONE in close collaboration with our R&D team and our partners.

## 35 INTERNATIONAL DESIGN AWARDS

- 7 Red Dot Design Award wins,
- 2 Honourable mentions
- 4 iF Award wins
- 6 Good Design Award wins



reddot award 2016  
winner



# BASIC CAR DESIGN COLLECTION

## Modern Simplicity

Casual, fresh designs that celebrate the beauty in simplicity.



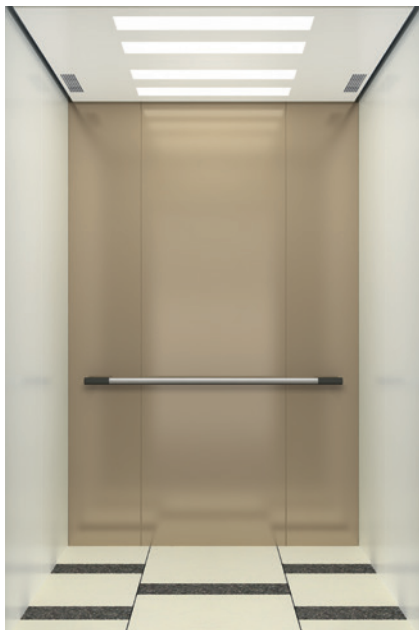
21013

**CEILING:** CL94, Silver (ST4) brushed stainless steel, **WALL B:** Pure White (PP10) painted steel, **WALL C:** Silver (ST4) brushed stainless steel, **WALL D:** Pure White (PP10) painted steel, **FLOOR:** Legno (DG05) patterned PVC, **HANDRAIL:** HR61 Silver (F) brushed stainless steel



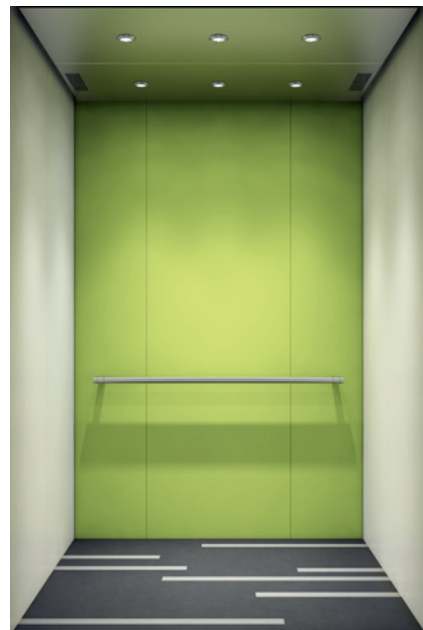
21014

**CEILING:** CL71, Silver (ST4) brushed stainless steel, **WALL B:** Pure White (PP10) painted steel, **WALL C:** Cosmo Red (METP2) metallic painted steel, **WALL D:** Pure White (PP10) painted steel, **FLOOR:** Chessboard (DG02) patterned PVC, **HANDRAIL:** HR31 aluminium, black plastic end caps



21015

**CEILING:** CL91, White (PP10) painted steel, **WALL B:** Pure White (PP10) painted steel, **WALL C:** Champagne (METP1) painted steel, **WALL D:** Pure White (PP10) painted steel, **FLOOR:** Puzzle Bright (DG04) patterned PVC, **HANDRAIL:** HR31 aluminium, black plastic end caps



21016

**CEILING:** CL88, Silver (ST4) brushed stainless steel, **WALL B:** Pure White (PP10) painted steel, **WALL C:** Fresh Green (PP22) painted steel, **WALL D:** Pure White (PP10) painted steel, **FLOOR:** Legno (DG05) patterned PVC, **HANDRAIL:** HR61 Silver (F) brushed stainless steel



**21005**

**CEILING:** CL103, Silver (ST4) brushed stainless steel, **WALL B:** Fresh Green (PP22) painted steel, **WALL C:** Fresh Green (PP22) painted steel, **WALL D:** Fresh Green (PP22) painted steel, **FLOOR:** Rocky Gray (D25) PVC, **HANDRAIL:** HR31 aluminium, black plastic end caps



**21007**

**CEILING:** CL91, Silver (ST4) brushed stainless steel, **WALL B:** Champagne (METP1) painted steel, **WALL C:** Champagne (METP1) painted steel, **WALL D:** Champagne (METP1) painted steel, **FLOOR:** Rocky Gray (D25) PVC, **HANDRAIL:** HR31 aluminium, black plastic end caps



**21017**

**CEILING:** CL71, Silver (ST4) brushed stainless steel, **WALL B:** Pure White (PP10) painted steel, **WALL C:** Pure White (PP10) painted steel, **WALL D:** Pure White (PP10) painted steel, **FLOOR:** Saturn Brown (D27) PVC, **HANDRAIL:** HR31 aluminium, black plastic end caps



**21018**

**CEILING:** CL95, Silver (ST4) brushed stainless steel, **WALL B:** Wool Gray (PP20) painted steel, **WALL C:** Wool Gray (PP20) painted steel, **WALL D:** Wool Gray (PP20) painted steel, **FLOOR:** Lava Stone (D26) PVC, **HANDRAIL:** HR31 aluminium, black plastic end caps

# BASIC CAR DESIGN COLLECTION

## Cool Vintage

Organic designs for a nostalgic yet progressive look and feel.



21009

**CEILING:** CL103, Silver (ST4) brushed stainless steel, **WALL B:** Silver (ST4) brushed stainless steel, **WALL C:** Silver (ST4) brushed stainless steel, **WALL D:** Silver (ST4) brushed stainless steel, **FLOOR:** Browny (DG01) patterned PVC, **HANDRAIL:** HR34 aluminium, black plastic end caps



21010

**CEILING:** CL71, Silver (ST4) brushed stainless steel, **WALL B:** Silver (ST4) brushed stainless steel, **WALL C:** Silver (ST4) brushed stainless steel, **WALL D:** Silver (ST4) brushed stainless steel, **FLOOR:** Blusher (DG06) patterned PVC, **HANDRAIL:** HR34 aluminium, black plastic end caps



21011

**CEILING:** CL91, White (PP10) painted steel, **WALL B:** Silver (ST4) brushed stainless steel, **WALL C:** Silver (ST4) brushed stainless steel, **WALL D:** Silver (ST4) brushed stainless steel, **FLOOR:** Puzzle Bright (DG04) patterned PVC, **HANDRAIL:** HR34 aluminium, black plastic end caps



21012

**CEILING:** CL94, Silver (ST4) brushed stainless steel, **WALL B:** Silver (ST4) brushed stainless steel, **WALL C:** Silver (ST4) brushed stainless steel, **WALL D:** Silver (ST4) brushed stainless steel, **FLOOR:** Legno (DG05) patterned PVC, **HANDRAIL:** HR34 aluminium, black plastic end caps

# Accessories and materials

## CEILING

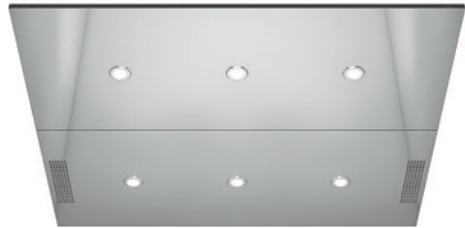


**CL71**

Lighting: T5 fluorescent tubes

Finishing: **PP10** White painted RAL9010

**ST4** Silver brushed stainless steel



**CL88**

Lighting: LED spot

Finishing: **ST4** Silver brushed stainless steel

**MP1** Silver mirror polished stainless steel

**MP2** Golden mirror polished stainless steel



**CL91**

Lighting: T5 fluorescent tubes

Finishing: **PP10** White painted RAL9010

**ST4** Silver brushed stainless steel



**CL94**

Lighting: T5 fluorescent tubes

Finishing: **PP10** White painted RAL9010

**ST4** Silver brushed stainless steel

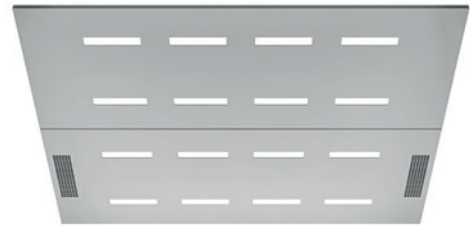


**CL95**

Lighting: T5 fluorescent tubes

Finishing: **ST4** Silver brushed stainless steel

**MP1** Silver mirror polished stainless steel



**CL103**

Lighting: T5 fluorescent tubes

Finishing: **PP10** White painted RAL9010

**ST4** Silver brushed stainless steel



## HANDRAILS

### Aluminium



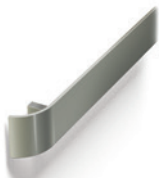
**HR31**

Round aluminium tube with black plastic end caps



**HR34**

Round curved aluminium tube with black plastic end caps



**HR24R**

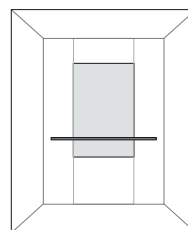
Curved ends silver brushed



**HR61**

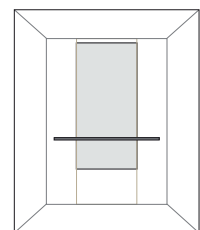
Round silver brushed

## MIRRORS



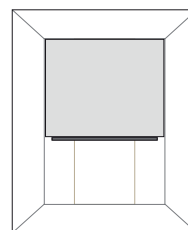
**MR1**

Partial width, partial height



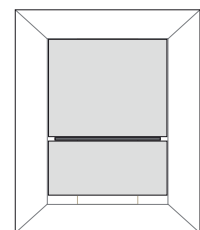
**MR1**

Partial width, medium height



**MR1**

Full width, partial height



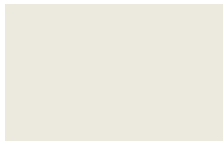
**MR1**

Full width, full height



WALLS

Painted steel



PP10\*  
Pure White



PP18\*  
Linen Brown

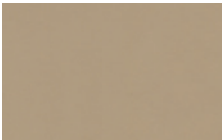


PP20\*  
Wool Gray



PP22\*  
Fresh Green

Metallic painted steel



METP1\*  
Champagne



METP2\*  
Cosmo Red

Brushed stainless steel



F1\*  
Asturias Satin

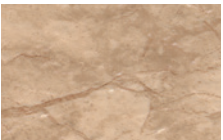


ST4\*  
Silver

\* Available also for front wall

FLOORS

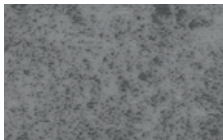
PVC



D-6  
Light Brown



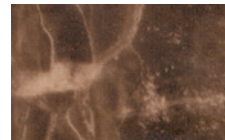
D24  
Moon White



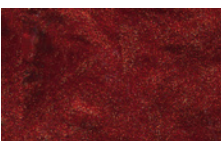
D25  
Rocky Gray



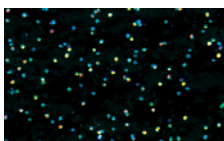
D26  
Lava Stone



D27  
Saturn Brown



D29  
Mars Red



D30  
Galaxy



D31  
Bamboo

Patterned PVC



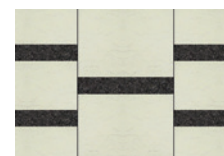
DG01  
Brown



DG02  
Chessboard



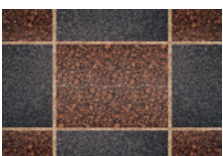
DG03  
Puzzle soft



DG04  
Puzzle bright



DG05  
Legno



DG06  
Blusher

# Materials

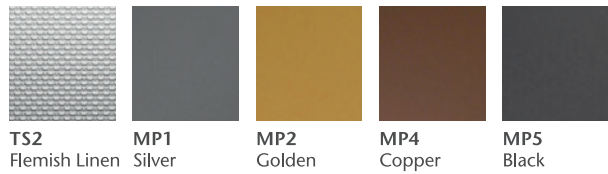
## Steel



**ST2**  
Golden



\* Also available as acid proof



## Painted steel



**METP1**  
Champagne



**PP10** White painted RAL9010  
**PP18** Linen Brown  
**PP20** Wool Gray  
**PP22** Fresh Green



**METP1** Champagne (metallic)  
**METP2** Chile Red (metallic)

## Etched stainless steel



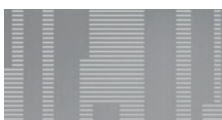
**ST31S**  
Silver High-rise



**ST26S**  
Silver Swing



**ST28S**  
Silver Pop



**ST31S**  
Silver High-rise



**ST37S**  
Silver Chain

## Glass



Transparent

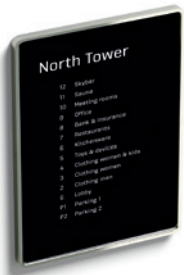


Transparent



**ST4**  
Silver (Frame color)

TENANT DIRECTORY



The printed tenant directory is completely customizable and can be easily updated according to the customer's needs.

Sizes



TD1



TD2

Directories can be installed either vertically or horizontally.

**TD1**  
Frame finishing: satin aluminum  
(only one finishing in SOC)

DIGITAL INFO SCREEN



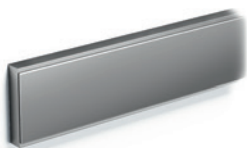
**IS08**  
Standard version, 8.4" display **P**  
Surface mounted

**IS15**  
Premium version, 15" display **P**  
Surface mounted

Additional features may be available. Consult your sales representative for more information.

Frame finishing: satin or mirror polished stainless steel

BUFFER RAILS

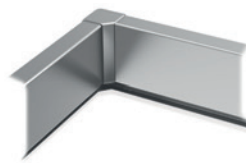


**BR1**  
Steel

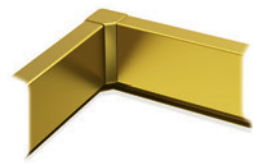


**BR1**  
Wood

SKIRTING

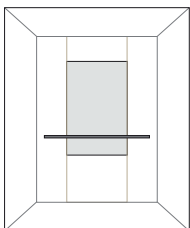


**ST4**  
Silver

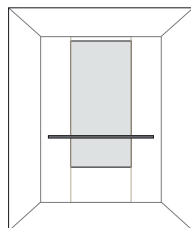


**ST2**  
Gold

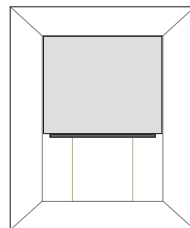
MIRRORS



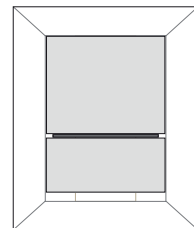
**MR1**  
Partial width, partial height



**MR1**  
Partial width, medium height



**MR1**  
Full width, partial height



**MR1**  
Full width, full height



KONE provides innovative and eco-efficient solutions for elevators, escalators, automatic building doors and the systems that integrate them with today's intelligent buildings.

We support our customers every step of the way; from design, manufacturing and installation to maintenance and modernization. KONE is a global leader in helping our customers manage the smooth flow of people and goods throughout their buildings.

Our commitment to customers is present in all KONE solutions. This makes us a reliable partner throughout the life cycle of the building. We challenge the conventional wisdom of the industry. We are fast, flexible, and we have a well-deserved reputation as a technology leader, with such innovations as KONE MonoSpace<sup>®</sup>, KONE NanoSpace<sup>™</sup> and KONE UltraRope<sup>®</sup>.

KONE employs close to 50,000 dedicated experts to serve you globally and locally.

**KONE Corporation**  
**[www.kone.com](http://www.kone.com)**

## KONE OFFICES IN SOUTH EAST ASIA

### Indonesia - PT. KONE Indo Elevator

Jakarta (main office)	+61 21 6570 3990
Bali	+62 361 895 7806
Bandung	+62 22 8606 0804
Makassar	+62 411 466 2780
Surabaya	+62 31 855 6383
Yogyakarta	+62 274 284 0089

**[www.kone.co.id](http://www.kone.co.id)**

### Malaysia - KONE Elevator (M) Sdn Bhd

Kuala Lumpur (main office)	+603 7494 7500
Johor Bahru	+607 559 0885
Penang	+604 656 3222
Sabah	+6015 4818 9128

**[www.kone.my](http://www.kone.my)**

### Philippines - KPI Elevators, Inc.

Makati City (main office)	+632 811 2929
Cebu	+63 32 233 5790

**[www.kone.ph](http://www.kone.ph)**

### Singapore - KONE Pte Ltd

Singapore	+65 6424 6246
-----------	---------------

**[www.kone.sg](http://www.kone.sg)**

### Thailand - KONE Public Company Limited

Bangkok	+66 2784 6500
---------	---------------

**[www.kone.co.th](http://www.kone.co.th)**

### Vietnam - KONE Vietnam LLC

Ho Chi Minh (main office)	+84 8 3997 5373
Hanoi	+84 4 3974 9445

**[www.kone.vn](http://www.kone.vn)**

## DISTRIBUTORS IN SOUTH EAST ASIA

### Brunei

Yusoki Sdn Bhd	+673 2790037
----------------	--------------

### Cambodia

Comin Khmere	+855 23 885 640
--------------	-----------------

### Laos

Comin Asia	+856 30 777 4777
------------	------------------

### Myanmar

Octagon Automobile & Machinery Services Co., Ltd	+95 9 8631438
--	---------------

### Sarawak(Malaysia)

Elebest Engineering Sdn Bhd	+60 82 365836
-----------------------------	---------------